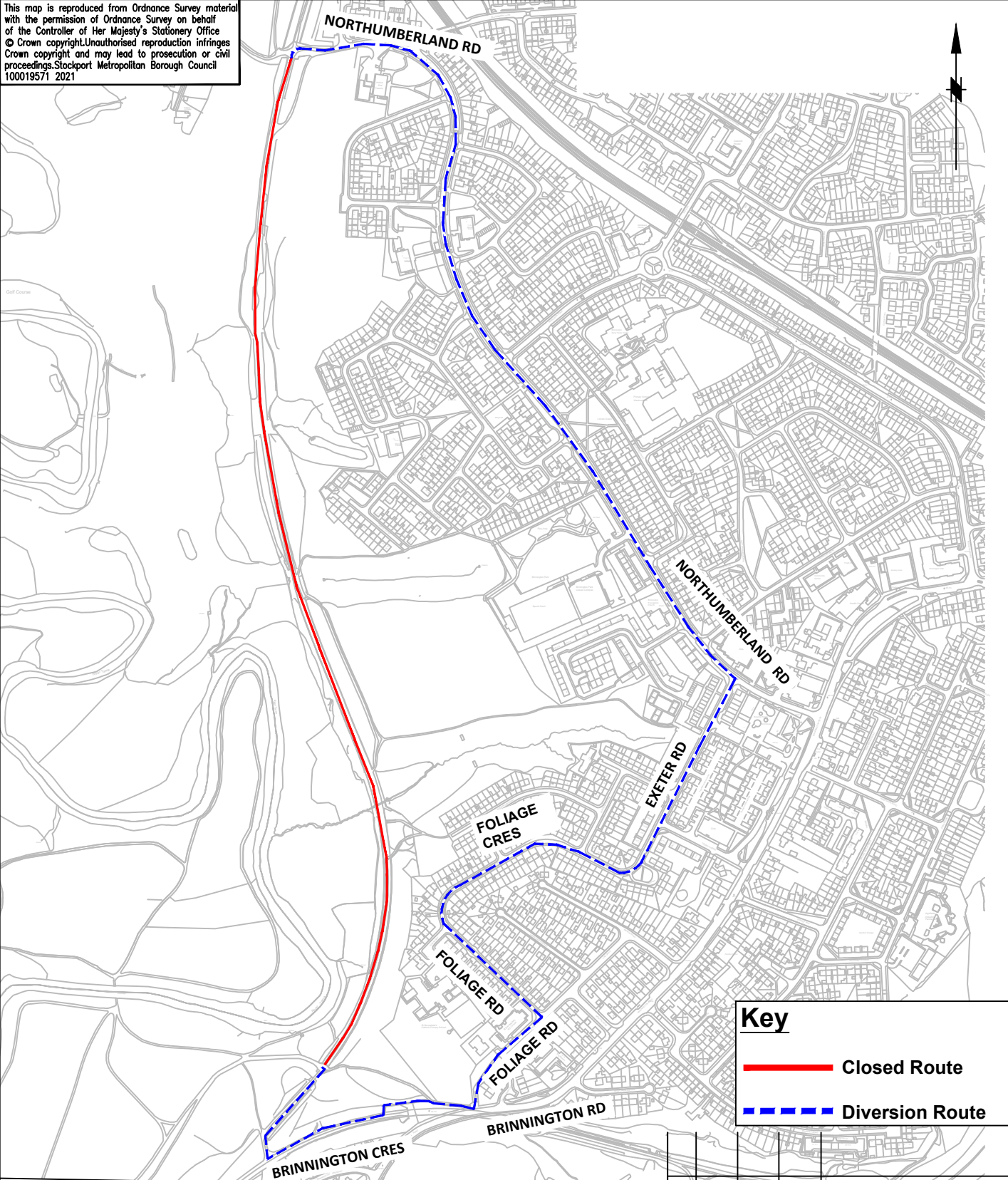


This map is reproduced from Ordnance Survey material with the permission of Ordnance Survey on behalf of the Controller of Her Majesty's Stationery Office © Crown copyright. Unauthorised reproduction infringes Crown copyright and may lead to prosecution or civil proceedings. Stockport Metropolitan Borough Council 100019571 2021



**Key**

——— Closed Route

- - - - - Diversion Route

Rev.	Drawn	Checked	Date	Revision Details



**STOCKPORT**  
 METROPOLITAN BOROUGH COUNCIL  
 HIGHWAYS AND TRANSPORTATION  
 STOPFORD HOUSE  
 STOCKPORT SK1 3XE  
 Tel: 0161 474  
 FAX: 0161

CAROLINE SIMPSON  
 DEPUTY CHIEF EXECUTIVE  
 JOB TITLE

NORTHUMBERLAND RD TO BRINNINGTON TUNNEL

DRAWN HJ	ENGINEER HJ	CHECKED AV	APPROVED AV
DATE 23/02/21	DATE 23/02/21	DATE 25/02/21	DATE 25/02/21
SCALE NTS		SCG No.	
DRAWING NUMBER D_8010_0100_005			Revision A

DRAWING TITLE  
**TEMPORARY CLOSURE**